

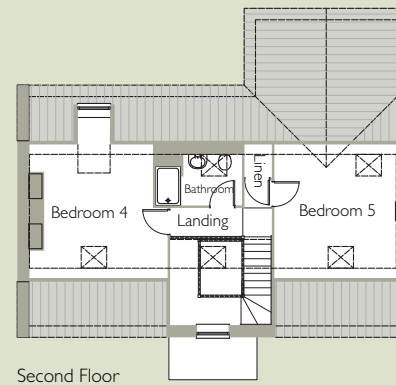
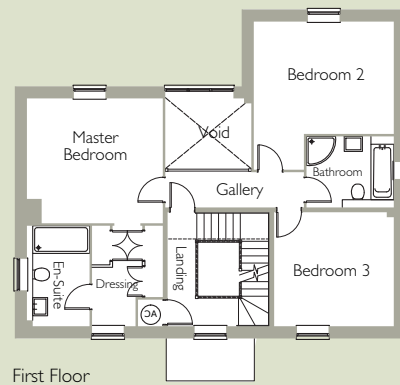
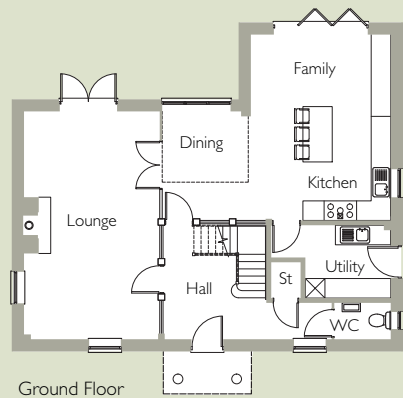


Front of property



Rear of property

## Hockley Croft 5 bedroom home with double garage



### Dimensions

Kitchen/Dining	5713 x 7025	18'7" x 22'10"
Lounge	7003 x 4175	22'9" x 13'7"
Utility	2625 x 2237	8'6" x 7'3"
Master Bedroom	4175 x 3837	13'7" x 12'6"
Bedroom 2	4303 x 3452	14'0" x 11'3"
Bedroom 3	3502 x 3675	11'5" x 11'11"
Bedroom 4	3803 x 3868	12'4" x 12'7"
Bedroom 5	3502 x 3747	11'5" x 12'2"