

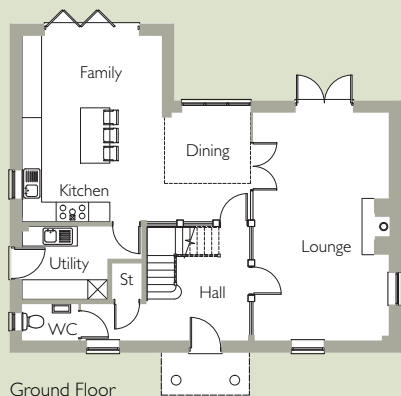


Front of property

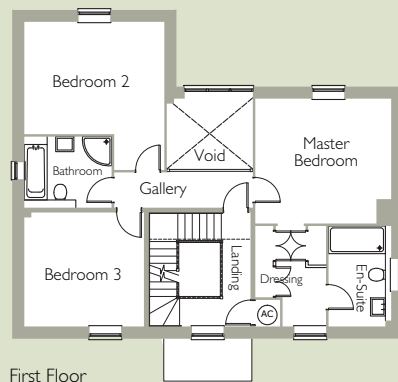


Rear of property

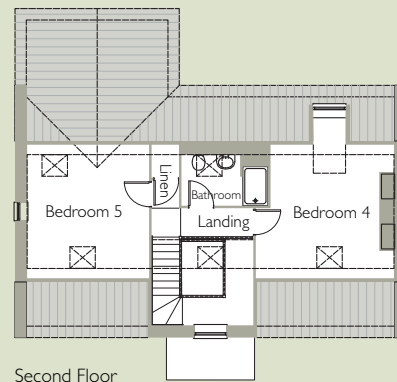
Starswood House 5 bedroom home with double garage



Ground Floor



First Floor



Second Floor

Dimensions

| | | |
|----------------|-------------|----------------|
| Kitchen/Dining | 5713 × 7025 | 18'7" × 22'10" |
| Lounge | 7003 × 4175 | 22'9" × 13'7" |
| Utility | 2625 × 2237 | 8'6" × 7'3" |
| Master Bedroom | 4175 × 3837 | 13'7" × 12'6" |
| Bedroom 2 | 4303 × 3452 | 14'0" × 11'3" |
| Bedroom 3 | 3502 × 3675 | 11'5" × 11'11" |
| Bedroom 4 | 3803 × 3868 | 12'4" × 12'7" |
| Bedroom 5 | 3502 × 3747 | 11'5" × 12'2" |